



Sustainability Matters

TKB Metals Private Limited

ISO 9001:2015 Certified

Contents

- ▶ Company Introduction.
- ▶ Organizational Structure.
- ▶ Certifications.
- ▶ What We Buy
- ▶ Manufacturing Facility.
- ▶ Manufacturing Capabilities
- ▶ Process Flow Diagram
- ▶ Primary Inspection Facility
- ▶ LAB Testing Equipment
- ▶ Safety Practices at TKB

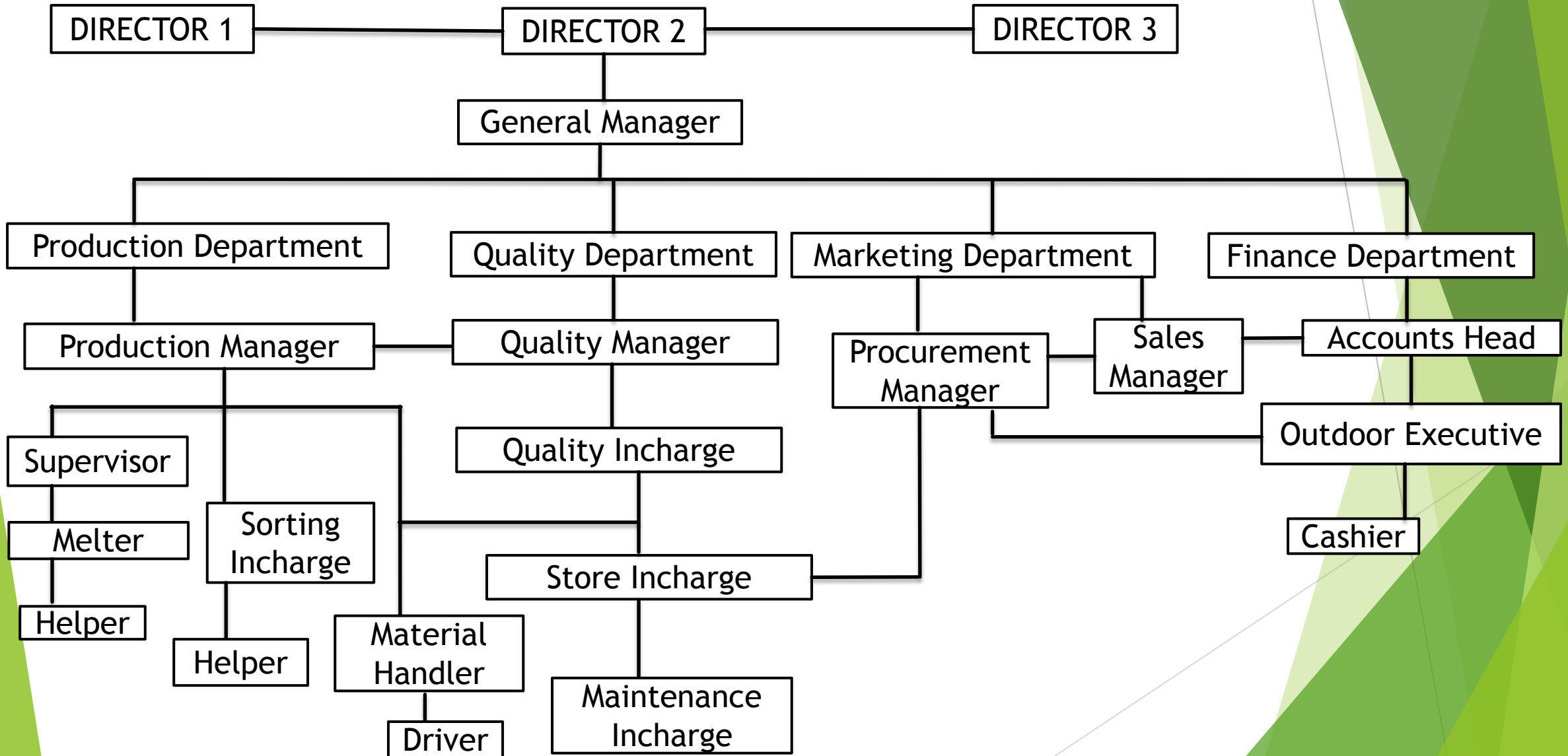
Introduction

- ▶ We hereby at TKB serving in the metal recycling industry for several years as an import house, through which we gained a lot of experience and decided to expand our business from non-ferrous vendors to manufacturing aluminium alloy ingots.
- ▶ Strongly we believe to serve our clients the optimum quality as per their requirements and our firms' primary goals are to achieve the client needs, using cutting-edge technology for quality improvisation, at competitive costs with respect to highest quality standards, to protect the environment, and to establish ourselves as the greatest place to work.

Introduction

- ▶ Through growth and forward integration, our aim is to be leading producers and suppliers of aluminium alloy ingots in India.
- ▶ The TKB family strongly believes in the concept of sustainability and is committed to providing long-term value to all our stakeholders who are directly or indirectly impacted by our operations.

Organizational Structure



CERTIFICATION



Our Import





WHAT WE BUY

- ▶ MIX CASTING TENSE
- ▶ ZORBA
- ▶ TAINT & TABOR
- ▶ EXTRUSION
- ▶ WHEELS



Manufacturing Facility



LUDHIANA, PUNJAB.

STATE OF ART FACILITY TO CONTROL AIR POLLUTION



Material Processing Facility

SKELNER FURNACE (6 T)



CONVEYOR-200 MOULDS



SPECTROMETER LAB



FINISHED GOODS



Material Handling Facility



FORKLIFT



UPTO 5 MTS



FOR LIGHT LOADS



UPTO 10 MTS

Manufacturing Capabilities

Chemical Composition

Elements	Cu	Si	Mg	Zn	Fe	Mn	Cr	Ni	Sn	Pb	Ti	Al
ALSI9CU3	2.00-3.50	8.00-11.00	0.55 max	1.2 max	1.20 max	0.50 max	0.5 max	0.3 max	0.1 max	0.20 max	0.15 max	Balance
ADC-12	1.50-3.50	9.6-12.00	0.30 max	1.0 max	1.0 max	0.50 max	0.2 max	0.5 max	0.20 max	0.10 max	1.10 max	Balance
ADC6	0.1 max.	1.0 max.	2.5 to 4.0	0.4 max	0.8 max	0.4-0.6	-	0.1 max	0.1 max.	0.10 max	0.20 max	Balance
JED29M1 (ADC-1)	0.7-1.2	10.50-13.50	0.35 max	0.55 max	0.6-1.10	0.55 max	0.1 max	0.3 max	0.15 max	0.20 max	0.15 max	Balance
JED 29 M3	2.00-4.00	7.50-11.00	0.50 max	3.0 max	1.30 max	0.60 max	-	0.50 max	0.30 max	0.30 max	0.20 max	Balance



Manufacturing Capabilities

Chemical Composition

Elements	Cu	Si	Mg	Zn	Fe	Mn	Cr	Ni	Sn	Pb	Ti	Al
LM-25	0.20 max	6.50- 7.50	0.20- 0.60	0.1 max	0.5 max	0.3 max	0. 1 5	0.1 max	0.05 max	0.20 max	0.10 max	Balance
LM-24	2.0-4.0 max	8-11%	0.05- 0.55 max	3.0 max	1.3 max	0.55 max	-	0.55 max	0.25 max	0.30 max	0.25 max	Balance
LM-9	0.20 max	10.00- 13.00	0.4- 0.6	0.12	0.6 max	0.3-0.7	-	0.1 max	0.05 max	0.1 max	0.20 max	Balance
HD-4	0.10 max	1.0 max.	4.0- 5.0 max	0.1 max	0.8 max	0.4-0.8 max	-	0.1 max	0.1 max	0.10 max	0.20 max.	Balance
LM-27	1.5-2.0	6.0-8.0	0.35	1.0	0.8	0.2-0.6	-	0.3	0.1	0.2	0.2	Balance

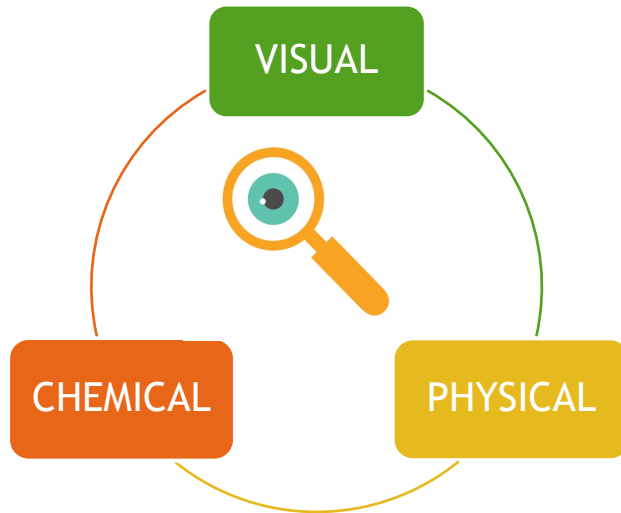
Manufacturing Capabilities

Chemical Composition

Elements	Cu	Si	Mg	Zn	Fe	Mn	Cr	Ni	Sn	Pb	Ti	Sr	Al
A356	0.20 max	6.50- 7.50	0.25- 0.60	0.1 max	0.2 max	0.1 max	-	0.1	-	-	0.05 -0.2 max	0.15- 0.25	Balance
4528 T6	1.75 -2.5	8.5- 9.5	0.15	0.5	0.4- 0.6	0.8	-	0.8	0.1	0.1	0.2	-	Balance
46100	1.5- 2.5	10-12	0.3	1.7	0.9	0.55	-	0.45	0.15	0.2	0.25	-	Balance
LM-6	0.1 max	10.5- 13 max	0.1 max	0.1 max	0.6 max	0.1 max	0.05 max	0.1 max	0.05 max	0.05 max	0.15 max	-	Balance
46400	0.8- 1.3	8.3- 9.7	0.35	0.8	0.8	0.15 - 0.55	-	0.2	0.1	0.1	0.1- 0.2	-	Balance

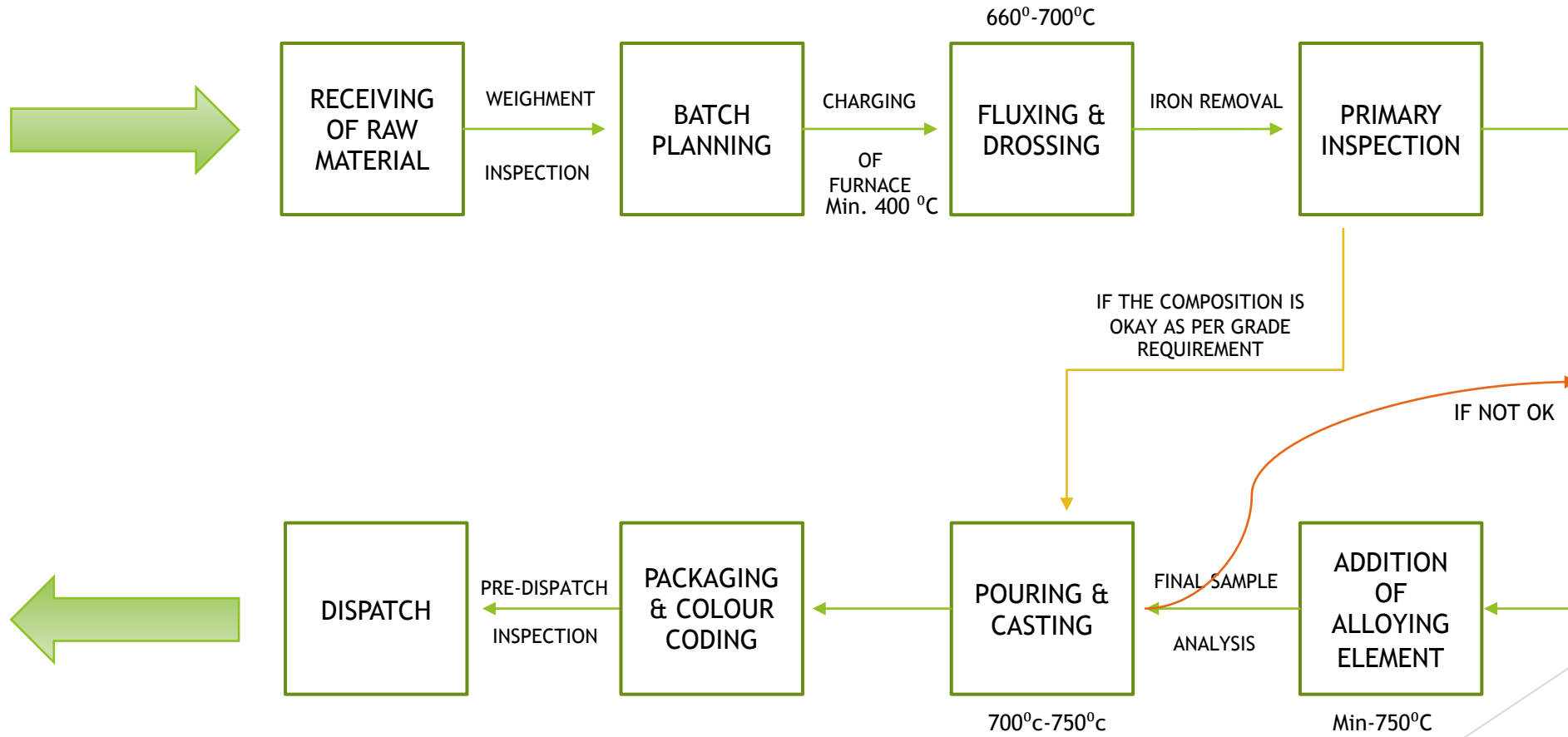
Inspection Facilities

- ▶ Multi-stage check of raw materials
- ▶ Sorting (Industrial Containers)
- ▶ Spectrometer Analysis
- ▶ K-Mould Test



BAILING MACHINE

Process Flow Diagram



Primary Inspection Facility



SAMPLE POLISHING MACHINE



LAB



HARDNEES TESTER



SPECTROMETER



UNIVERSAL TESTING MACHINE

TESTING EQUIPMENTS

Safety Practices at TKB

SITE SAFETY RULES

1 ALWAYS WEARS PPE

PPE is your last line of defence against danger. It protects you if something goes wrong, and helps make sure you are seen. Wear it



2 GET YOUR INDUCTION

Make sure you know what is happening on site so you can work safely. Your induction is important. don't start without one



5 FOLLOW SIGNS

Follow signs and procedures. Check risk assessments and systems of work. Control measures are put in place for your safety



6 DO NOT ENTER

Never work in unsafe areas. Don't work at height without suitable fall prevention. Don't enter unsupported trenches. Don't work below crane loads or other dangerous operations



9 USE RIGHT EQUIPMENTS

Use the right equipment for the task Check and test for defects before use. Use 110v equipment only, suitable for use on a construction site



3 BE TIDY

Construction work is messy. Keep your work area tidy to reduce the risk of trips and slips, and fire hazards. Keep access routes clear.

4 ACT SAFE

Construction sites are dangerous places to work. Think safe and act safe throughout your shift

7 REPORT

If you notice a problem, don't ignore it, report it to your supervisor immediately.

8 DON'T TAMPER

Never remove guard rails or scaffold ties. Do not remove guards. Do not attempt to fix defective equipment unless you are competent to do so. Do not ever tamper with equipment without authorisation.

10 IF IN DOUBT, ASK

Better safe than sorry Mistakes on construction sites can cost lives-don't let it be yours. If you need help or further information speak to your supervisor.

First Aid and Accident Prevention in Plant



FIRE EXTINGUISHERS



SAND BUCKETS



FIRE HYDRANT

Visual Display for Motivation

PERSONAL PROTECTIVE EQUIPMENTS

सुरक्षा हेलमेट		हमेशा सुरक्षा उपकरणों का उपयोग करें
कान के उपकरण		
शरीर आवरण		
सुरक्षा चश्मे		
हाथों के दस्ताने		
सुरक्षा जुते		



www.posterkart.in

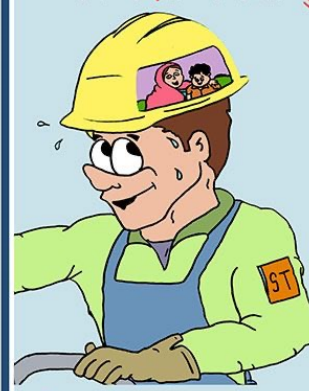
सुरक्षा, मुआवजे से बेहतर है



विघटित करके जोड़ने के लिए आप खिलौना नहीं है।

www.posterkart.in


मेरे परिवार की रक्षा करता हूँ।



मैं सुरक्षा से काम करता हूँ।

www.posterkart.in

अरे भाई! क्यों ये जोखिम भरा प्रयोग ...



उचित उपकरणों का प्रयोग करें!

www.posterkart.in

5 Tips To Ensure That Your Employees Are Safe In The Workplace



- Keep Your Work Areas Clean**
Whether you work in an office or in a warehouse it's important to always keep your work areas clean. Stream garbage, unattended wires, and boxes piled floor to ceiling can create dangerous hazards for everyone.
- Give Clear Instructions**
Workplace safety is every manager's responsibility. If you don't give your employees clear instructions about what they need to do they may do the wrong thing causing danger to themselves and others.
- Show You Care**
You should show your employees that you care about them more than deadlines by shutting the machines down to avoid a potential safety hazard.
- Ensure Everyone is Properly Trained**
One of the best ways to avoid an accident is to ensure everyone in your team is properly trained. Offer the right amount of training and then make sure new employees are supervised properly.
- Create a Safety Bulletin Board**
Build a safety bulletin board in your workplace. This will serve as a general hub of safety-related information. You can include potential work hazards, news about upcoming renovation projects, etc.

www.posterkart.in

OUR ESTEEMED BUYERS

- ▶ UNO-MINDA GROUP (RUDRAPUR)
- ▶ CASTMASTER INDUSTRIES PVT LTD (FARIDABAD)
- ▶ SHAKTI HI-TECH AUTO COMPONENTS (FARIDABAD)
- ▶ SHRADDHA UDYOG (FARIDABAD)
- ▶ AMV CASTING PVT LTD (MANESAR)
- ▶ SUNRAYS ENGINEERS PVT LTD (MANESAR)
- ▶ CHIRAG DIE CAST PVT LTD (GHAZIABAD)
- ▶ JAGDEV ENGINEERING SOLUTIONS PVT LTD (LALRU)
- ▶ ALIGARH ENGRAVING WORKS (LUDHIANA)
- ▶ PERFECT METTCAST PVT LTD (LUDHIANA)
- ▶ RAJNISH INDUSTRIES PVT LTD (LUDHIANA)
- ▶ RCJ AUTO FORGE LTD (LUDHIANA)
- ▶ SWAROOP MECHANICAL WORKS (LUDHIANA)
- ▶ GLOBAL ELMECH (JALANDHAR)

THANK YOU

+91 8410000090, +91 7986770113

www.tkbmetals.com